



28 Trevelyan Court, Windsor, SL4 3SE
£445,000

 **HORLER**

28 Trevelyan Court, Windsor, SL4 3SE

Nestled in the desirable Trevelyan Court, Windsor, this splendid three-bedroom ground floor apartment is now available for those seeking a comfortable and convenient living space. The property is purpose-built and has been meticulously maintained, ensuring a welcoming atmosphere for its future residents.



Welcome to this beautifully presented and spacious 3 bedroom ground floor apartment, perfectly situated within walking distance of Windsor town centre, two mainline train stations, and excellent bus links.

The apartment opens into a wide and welcoming entrance hall, providing access to all rooms and creating an immediate sense of space and flow. The accommodation includes two generously sized double bedrooms, each with its own en-suite bathroom and built-in wardrobes, while the third bedroom offers flexibility as a guest room, home office or study. A further guest cloakroom adds additional convenience.

The fully fitted modern kitchen features integrated appliances, including a dishwasher. Separately, there is a well-proportioned dining room which leads through to the large, light-filled lounge — ideal for entertaining or relaxing. Floor-to-ceiling windows throughout the living areas allow for an abundance of natural light and provide direct access to both the front and rear of the apartment, opening onto the beautifully maintained communal gardens.

The apartment is accessed via a secure communal entrance, recently upgraded with a new security door, and benefits from a dedicated parking space as well as ample visitor parking.

Combining generous living space, modern comfort, and an enviable location, this apartment offers a superb lifestyle opportunity for professionals, downsizers or anyone seeking a stylish and conveniently located home in Windsor.

General Information:

Tenure: Leasehold

Lease Remaining - Approx. 134 Years

Current Service Charge: Approx. £3697.76 per annum

Current Ground Rent: Approx. £300 per annum

Council Tax Banding: E

Legal Note:

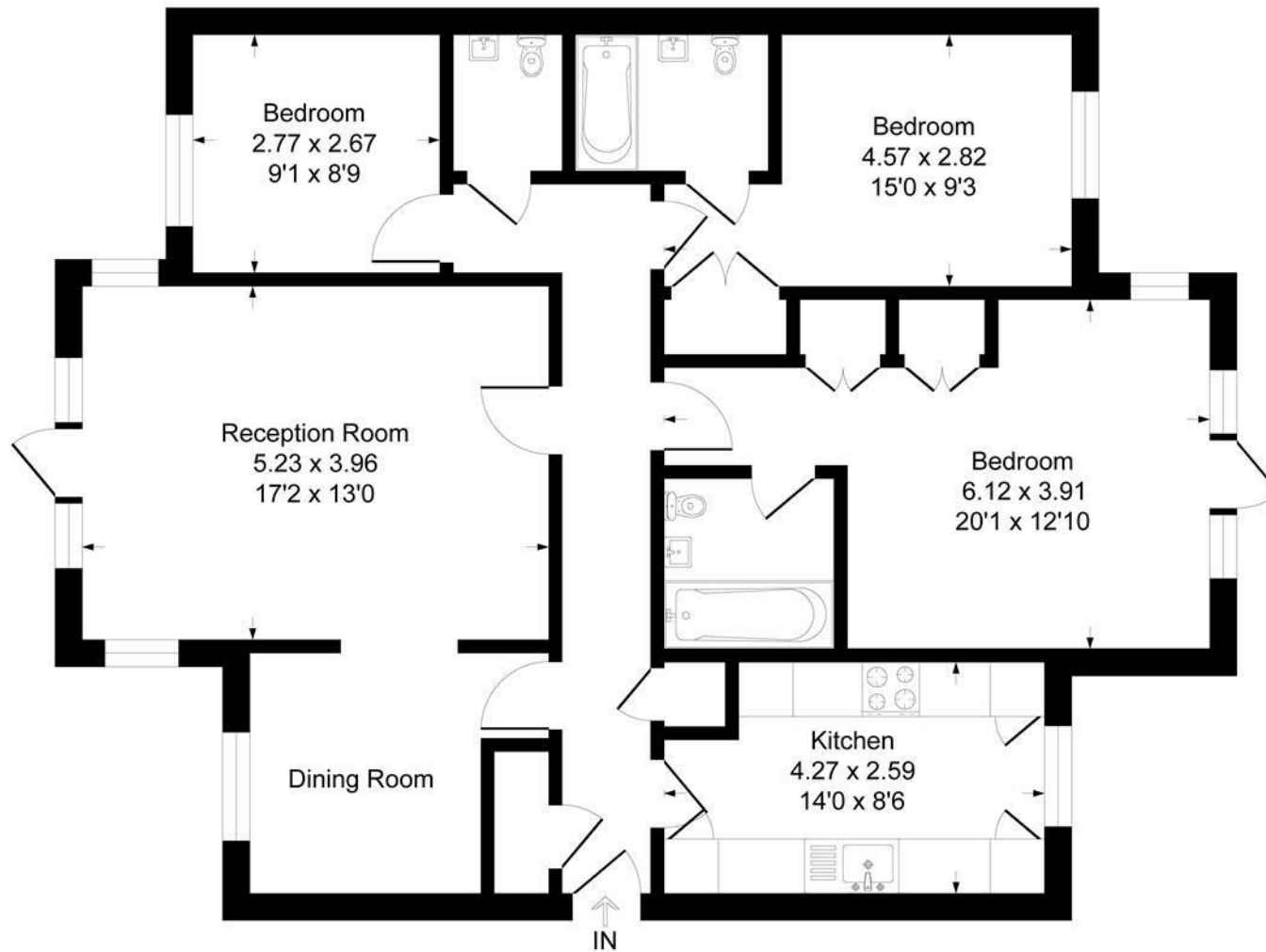
Although these particulars are thought to be materially correct their accuracy cannot be guaranteed and they do not form part of any contract.





Trevelyn Court SL4

Approximate Gross Internal Floor Area = 103.2 sq m / 1111 sq ft



Ground Floor

Illustration for identification purposes only, measurements are approximate, not to scale.

Produced By Esjay Property Marketing